

# INSIDE THIS ISSUE

---

## PG. 2

The expansion exercises and company's transformation

---

## PG. 3

About ASB and Corporate Structure

---

## PG. 4

The key people and management team



## ASB'S TRANSFORMATION

### INTO WORLD CLASS OIL & GAS (O&G) SERVICE PROVIDER

Asian Supply Base (ASB) ongoing objective is to achieve optimal results by providing its customers with the best operational service and value, acquiring Oil & Gas (O&G) related businesses, hiring, and developing the best-qualified people, utilizing a well-maintained equipment fleet and new technologies, emphasizing high expectations for performance and integrity, and upholding the highest safety standards.



## CHAIRMAN DESK

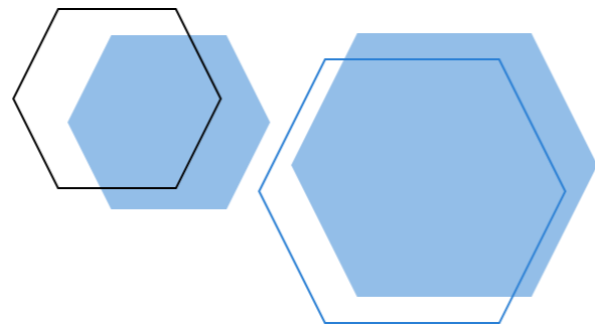
DATO' INDERA SUHAILI BIN ABDUL RAHMAN - CHAIRMAN

ASB is prepared to invest in the expansion exercise with a focus on improving efficiency, facility, and customer experience.

We have been discussing the expansion plans and identified the suitable land for the expansion and it is now for the government especially the local authority to chip in to facilitate the land deal.

With the increased demand from our customers and our growth prospect, our primary focus moving forward is to optimize the current terminal.

Since its operation in 1984, the company has created thousands of employment opportunities for the locals of Labuan and Sabah as well as supporting business activities.



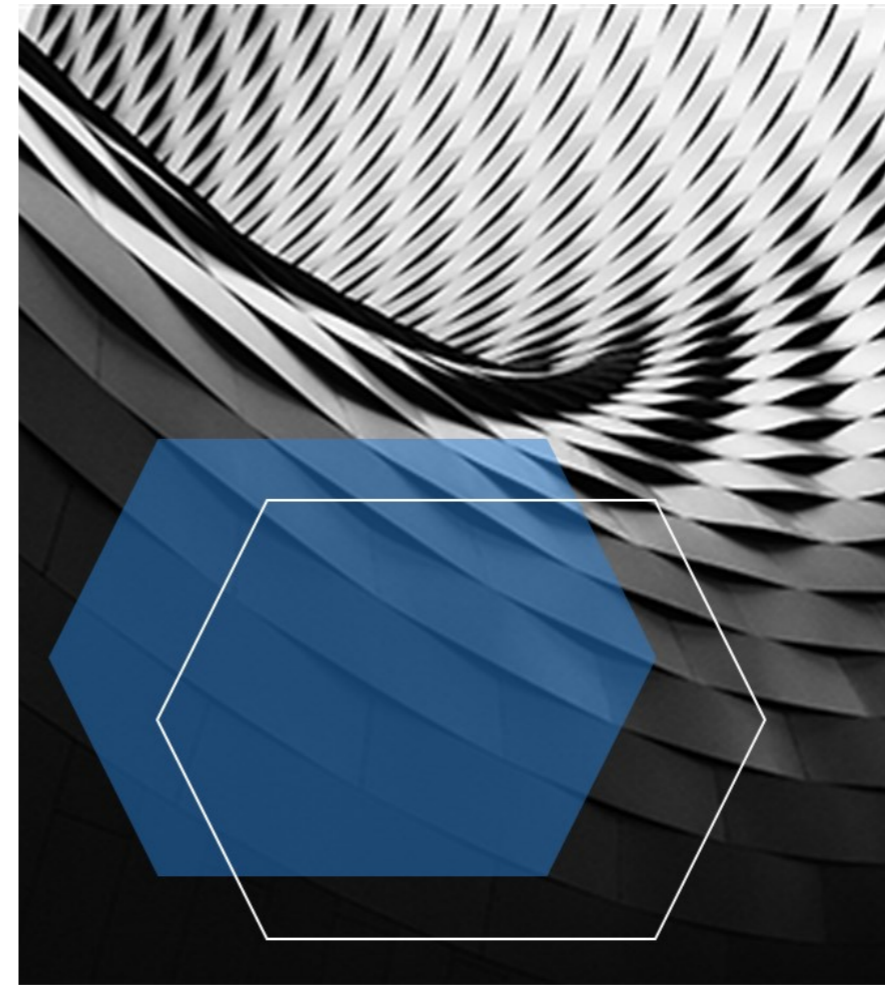
## THE WAY FORWARD

JAPAR ESTEBAN – CHIEF EXECUTIVE OFFICER

“Professionalism doesn’t mean you need to wear a business suit. Professionalism is being confident, respectful and deliver .”

Embarking on a transformation is the first thing that I am going to deliver as the CEO of ASB. As it requires big commitments both internally and externally, I believe that the transformation is the key for ASB to move forward to become a World Class O&G Service Provider.

Emerging transformation improvements in health, safety, and environmental (HSE) performance, more efficient, and lower-cost supply, revived technology developments, reconsidered business models, land expansion and business diversifications are the key for ASB to leap beyond a mere logistic company.



## ABOUT US

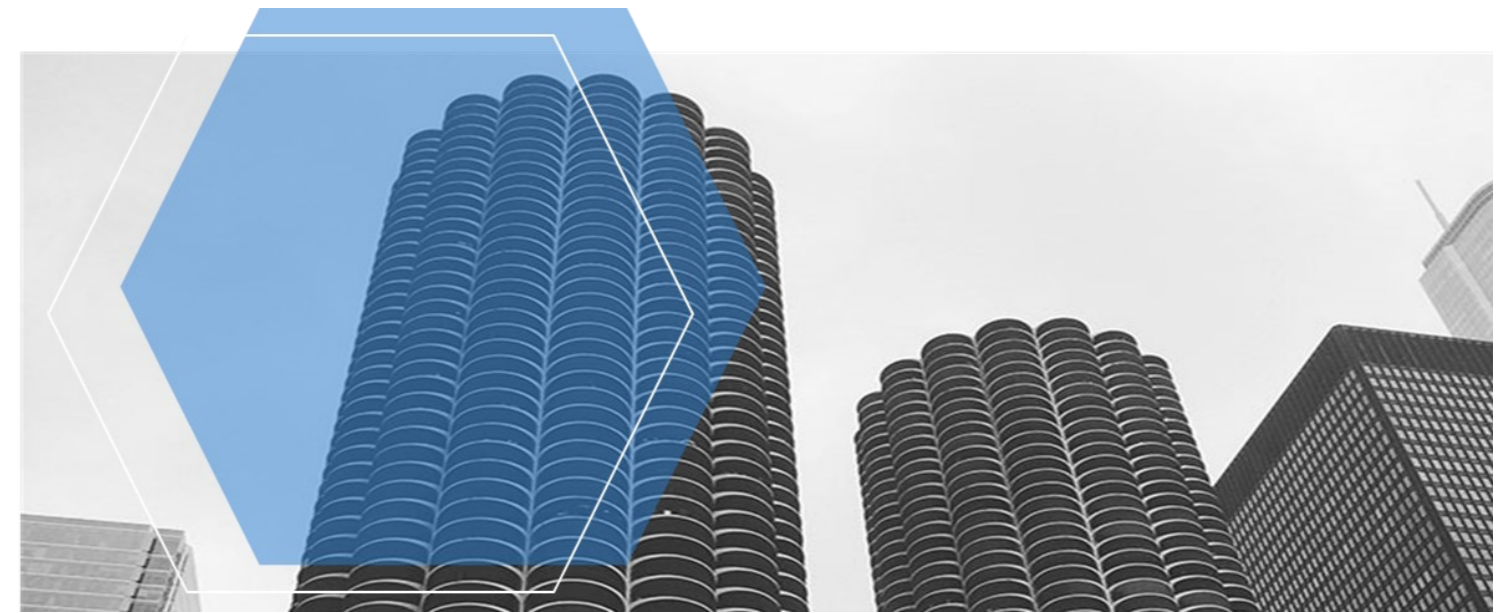
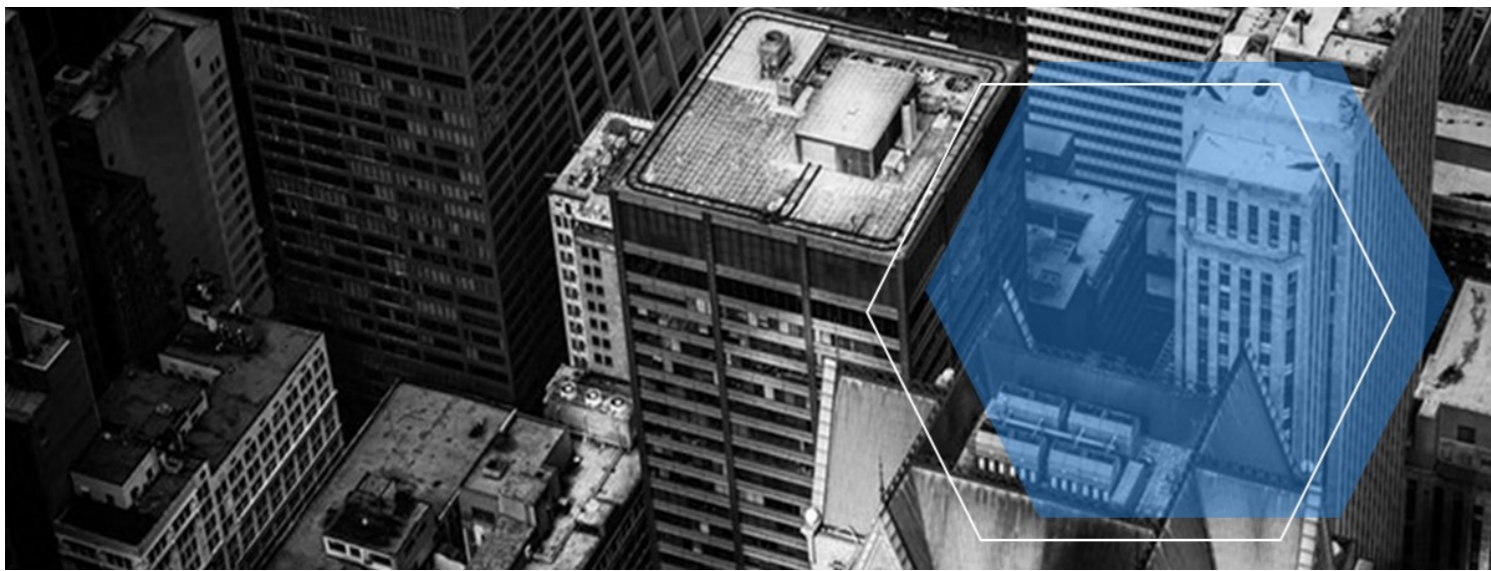
ASIAN SUPPLY BASE (ASB)

**Asian Supply Base (ASB)** is wholly owned by the **State Government of Sabah** via **Sabah Energy Corporation (SEC)** and was incorporated on **17th March 1984** as an Offshore Supply Base to participate and support the Oil & Gas exploration, development, and production (EDP) activities off the coast of Sabah & Sarawak.

Since its formation, ASB has been operating on **24 hours, 7 days a week** and **365 days a year** in exclusively providing facilities and services that are tailored to the requirements of the Oil & Gas companies.

## CORPORATE STRUCTURE





## MEET OUR TEAM



JAPAR ESTEBAN  
Chief Executive Officer



DAVID AGANG TEO  
SCM & Base  
Development



IDRIS MOHAMAD  
Corporate  
Services



ALICE WONG  
Procurement



DONALD CHIN  
Finance



MASHKURI HARUN  
Human  
Resources



CHENG GUAN VOON  
Infrastructure &  
Engineering



KER BOON CHONG  
Marine  
Services



ZULAINAHWATY  
SULAIMAN  
Corporate QHSE

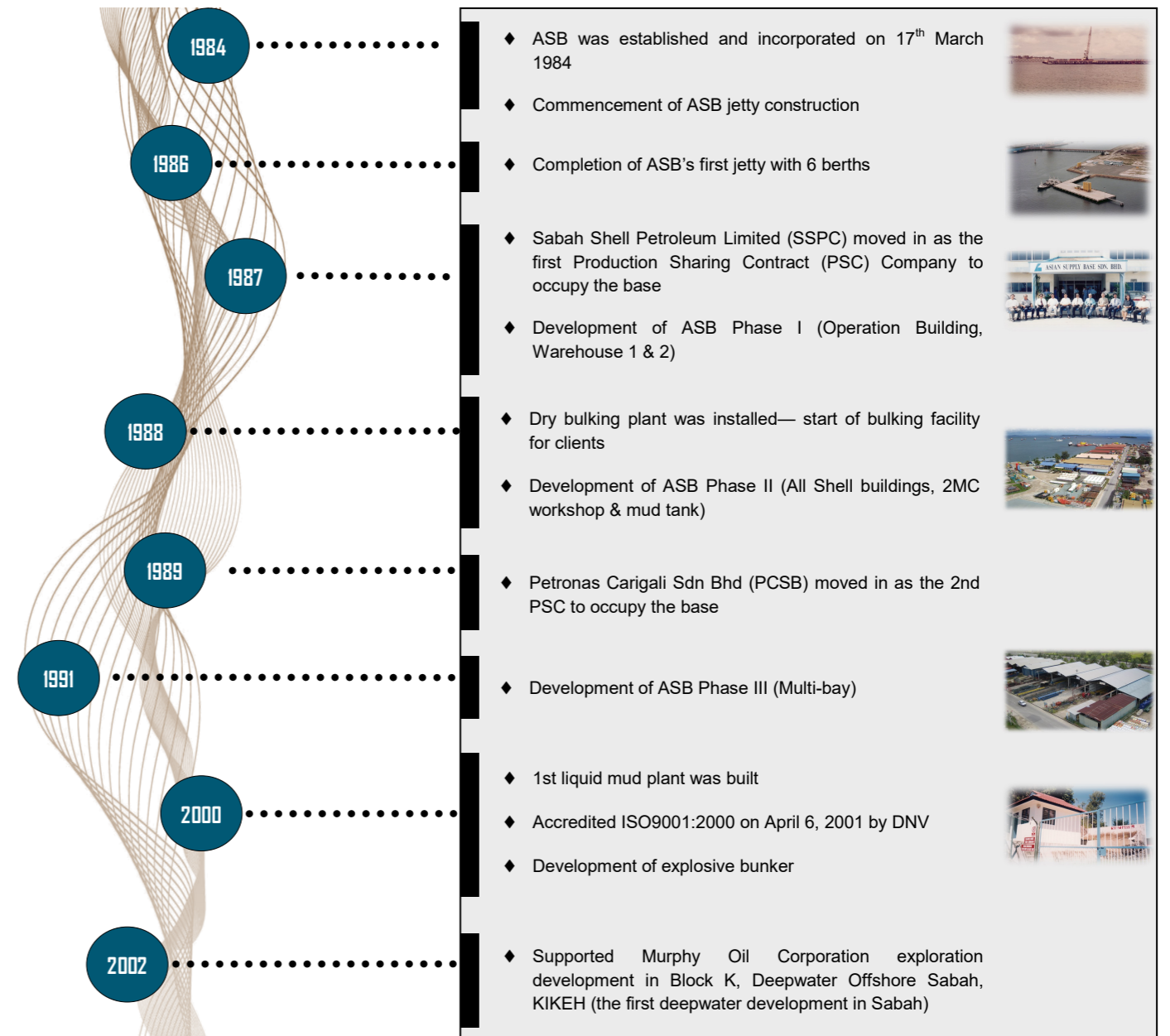


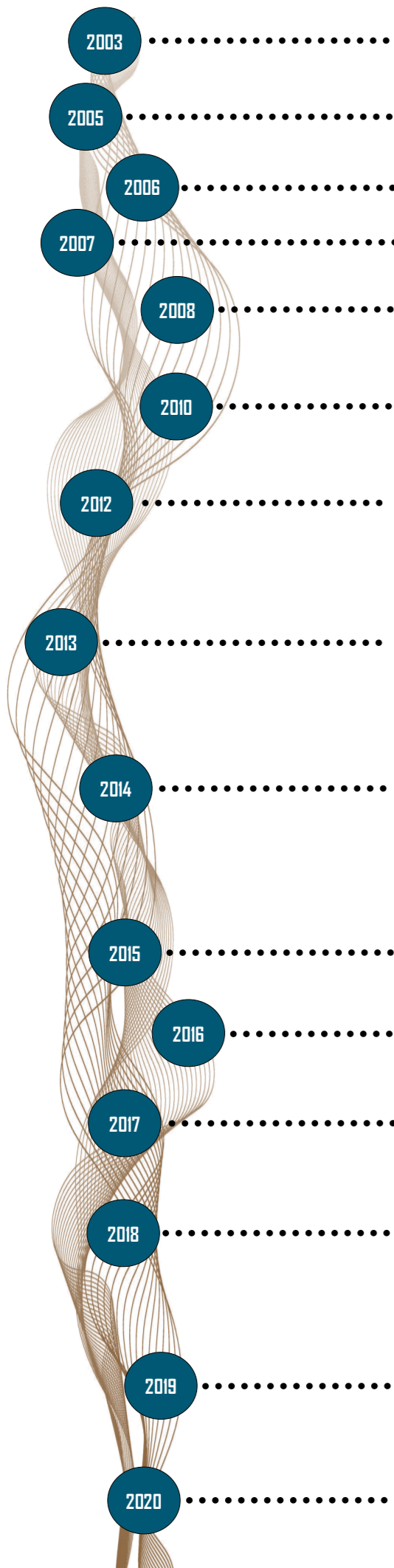
RAZAK ALLI  
PMO



MARVIN CHONG  
Corporate  
Legal Services

## CORPORATE MILESTONES

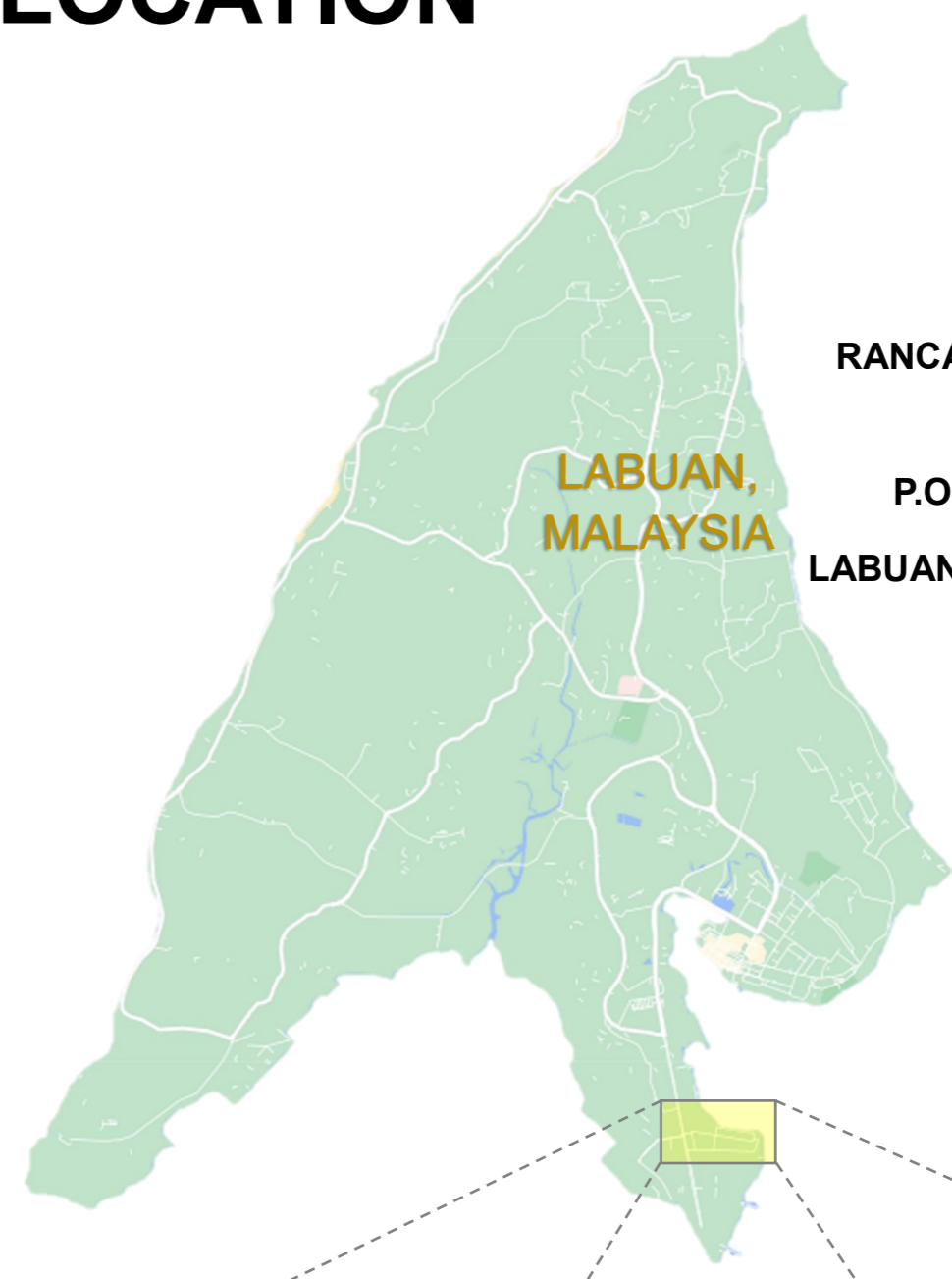




- ◆ 2003 Extension of ASB Jetty (consists of 2 berths)
- ◆ 2005 ASB's expansion – reclamation of the northern foreshore area complete with quay wharf (approx. 10 acres); consist of 4 berths
- ◆ Second liquid mud plant was built
- ◆ 2006 Obtained Electricity Distribution License for ASB
- ◆ 2007 Mooring jetty was constructed
- ◆ Accredited by DNV with Integrated Management System:
  - (i) SO 9001:2008
  - (ii) ISO 14001:2004
  - (iii) SAS 18001:2007
- ◆ Asian Supply Base Maritime Resources Sdn Bhd was established as a service provider for Offshore Support Vessels
- ◆ Won Silver award (2012 OSH Performance) by The Malaysian Society For Occupational Safety and Health
- ◆ ASB was gazetted as National Key Point
- ◆ 13 bays workshops at 23 acres (constructed by VL)
- ◆ Signed the Corporate Integrity Pledge (CIP) with Malaysia Anti Corruption Commission (MACC)
- ◆ 7 bays workshops at 23 acres (constructed by VL)
- ◆ Acquired a warehouse and converted it into Industrial Office & Warehouse
- ◆ 2013
- ◆ WISMA ASB, a 4-storey office building was officially launched
- ◆ Achieved the highest revenue since incorporation
- ◆ New ASB MHE workshop
- ◆ Additional 2 units warehouses at 23 acres (constructed by VL)
- ◆ 2014
- ◆ Accredited with 5s Certification (MHE Workshop) by Malaysia Productivity Corporation (MPC)
- ◆ Officially launched ASB Permit to Work (PTW) System, Fire Truck, Ambulance & Occupational Health Unit.
- ◆ 2015
- ◆ 2016
- ◆ Upgrading of Integrated Management System Standard from:
  - (i) ISO 9001:2008 to ISO 9001:2015
  - (ii) ISO 14001:2004 to ISO 14001:2015
- ◆ The transition of Occupational Health & Safety Management System Standard from OHSAS 18001:2007 to ISO 45001:2018.
- ◆ 3PL 1st voyage
- ◆ 2017
- ◆ Gold 2 Award for a "Very Good 2019 OSH Performance" by the Malaysian Society for Occupational Safety & Health (MSOSH).
- ◆ Launched ASB owned dedicated LCTs for 3PL operation
- ◆ Launched ASB owned 350 Ton Crane
- ◆ 2018
- ◆ 2019
- ◆ 2020 Gold Class 2 for a "Very Good OSH Performance 2020" by the Malaysian Society for Occupational Safety & Health (MSOSH).



# LOCATION



**WISMA ASB,  
RANCA-RANCA INDUSTRIAL  
ESTATE,  
P.O. BOX 80751, 87017  
LABUAN FEDERAL TERRITORY,**





ANTARA STEEL MILLS SDN BHD



- ASB BUILDING
- ASB FACILITY

### ASB MAIN BASE

- ① ASB MAIN BUILDING
- ② QUAY WHARF
- ③ ALL WEATHER JETTY
- ④ BULKING & LIQUID MUD PLANT STORAGE
- ⑤ EMERGENCY FIRST RESPONDER (AP&FIRE)
- ⑥ ASB OPERATION BUILDING

### FACILITIES & SERVICES

- MARITIME SERVICES
- OPEN YARD & WAREHOUSE STORAGE FACILITIES
- MULTI-BAY WORKSHOP
- EXPLOSIVE STORAGE BUNKER
- MATERIAL HANDLING EQUIPMENT & MANPOWER SERVICES
- CARGO CARRYING UNITS

# FACILITIES & SERVICES

## ALL WEATHER JETTY



ASB has a sheltered sea frontage with water depth ranging from 8 to 9 meters. ASB's wholly owned all-weather jetty and quay wharf are able to provide adequate berthing space for fourteen (14) supply boats at any one time with a turnaround time of 5 to 6 hours. Night operations can be carried out efficiently with the installation of flood lights at strategic locations of the working area.

## QUAY WHARF



ASB's quay wharf situated at the northern foreshore of the base has a total area of approximately 10 acres, with a working concrete platform of 26 meters in width along the perimeter of the wharf. The quay wharf has

four (4) berthing facilities, with each berth capable of supplying:

- Potable water,
- Liquid mud & drilling fluids,
- Fuel,
- Dry bulk,
- Loading and unloading of equipment, tools and consumables for offshore supplies.

Flood lights and fire hydrants are installed at strategic work areas to ensure a safe and visible working environment, especially when night operations are carried out daily.

## MARITIME SERVICES



ASB Maritime Resources was established in 2010 as an integrated service provider in marine transportation for the oil & gas industry. As a PETRONAS licence holder for Marine Transportation and Operation, ASB currently manage and supply four (4) offshore vessels to meet the requirement of our clients. Our own fleet of marine vessels comprises a two (2) general purpose vessel, one

(1) anchor handling tug (AHT) and one (1) fast crew boat. ASB Maritime's very own 40 MT AHT also supports berthing and unberthing job for Vantage Offshore Solution Sdn Bhd at Labuan SBM. The following picture is one of ASB's AHT:



## BULKING & LIQUID MUD PLANTS STORAGE FACILITIES



The bulk plant silo platform on the jetty head provides silos for the storage and rapid loading of materials such as barite, bentonite, and cement. The liquid mud plant (LMP) has the capability to store and supply liquid chemicals such as oil base mud, base oil and water mud to meet the demands of oil and gas players for deep and ultra-deep offshore drilling activities.

## OPEN YARD & WAREHOUSE STORAGE FACILITIES



Adequate open yards, closed storage and open storage facilities are fully available and equipped with basic amenities. Warehouses with a total floor storage area of 42,204m<sup>2</sup> are available to accommodate storage of Chemical drums, Drilling Tools and other consumables for current and future needs of the exploration, development and production activities of the Oil and Gas industry.

## MULTI-BAY WORKSHOP



Well-equipped workshop facilities with overhead cranes are available to support services companies activities as follows:

- Cargo handling equipment

- Engineering and fabrication works
- Equipment installation
- Commissioning support
- Repair and maintenance

50-350 tonnes), pipe handlers, forklifts, trucks, prime movers and trailers are available. All equipment are operated by competent MHE operators and trained support personnel.

# VALUED CLIENTS

## EXPLOSIVE STORAGE



We are licensed under Rule 8 & 58 of the explosives Enactment (Cap 200) to store, import, export or remove explosive materials for the clients in their Oil & Gas exploration and drilling activities. Specially-built containers are available for the storage of oil well explosive materials. The bunkers are situated at a designated safe and secure location.

## CARGO CARRYING UNITS



Offers a full range of DNV certified Cargo Carrying Units (CCUs) with lifting slings and shackles including equipment such as containers, open top baskets, long baskets, rubbish skips, drum baskets, and gas racks.

## MATERIAL HANDLING EQUIPMENT & MANPOWER SERVICES



Material handling equipment (MHE) and transport vehicles such as heavy lift cranes (tonnage ranging from

## FIRST RESPONDER UNIT— AP, FIRE FIGHTERS & OHU



The base is a fully protected area. All entrances and exits are manned round the clock by Auxiliary Police personnel and monitored by 24 hours CCTV surveillance for security purposes.



# HIGHLIGHTS

COVID-19 has taken a significant toll on people all across the world. With the implementation of strict SOPs as containment measures and economic disruptions related to the outbreak, oil and gas players have been greatly affected. Despite this, ASB has successfully taken up new projects to further facilitate base users during these trying times and accommodate clients in carrying out their oil and gas related activities in Sabah waters efficiently.

## INTEGRATED LOGISTICS SOLUTION

The ILS is a result of the collaboration between PETRONAS and Asian Supply Base. Best known as ASB 3PL or “ASB 3rd Party Logistics” - ASB 3PL manages the outbound and inbound logistics of client’s materials, with the work package inclusive of marine and supply base services. Vessels dedicated under this work package currently delivers to two regions under PETRONAS SBA — the southern (Sumandak, Samarang and Kinabalu oilfield) and northern (Erb West, Tembungo and Kinarut oilfield) region.



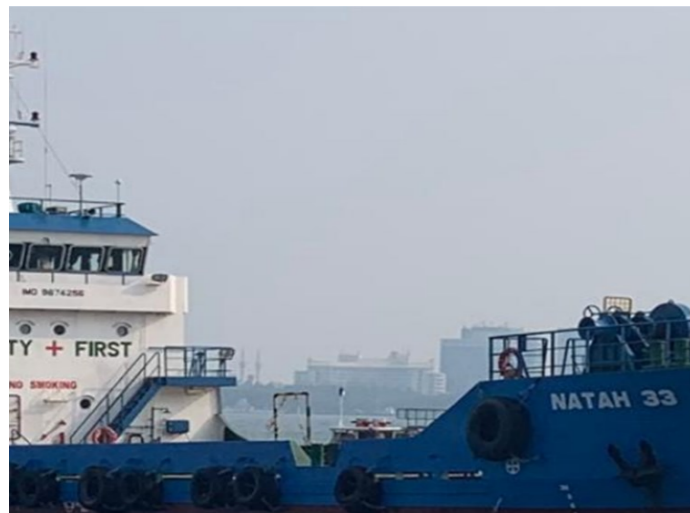
Another LCT vessel owned and chartered by ASB that is currently dedicated for 3PL work package for PETRONAS MMS — the **Swath Perdana** vessel.



The **Kota Belud** LCT vessel is used to accommodate to any additional needs by clients, especially when operation is carried out differently from the usual (eg: client carries out turnaround operation at platform).

## PROJECT SAFINA

With the effort to replace aging fleets that are currently in operation, PETRONAS has recently tendered out the Safina Phase 1 Project — which is basically for the building of 16 offshore support vessels (OSVs). For this

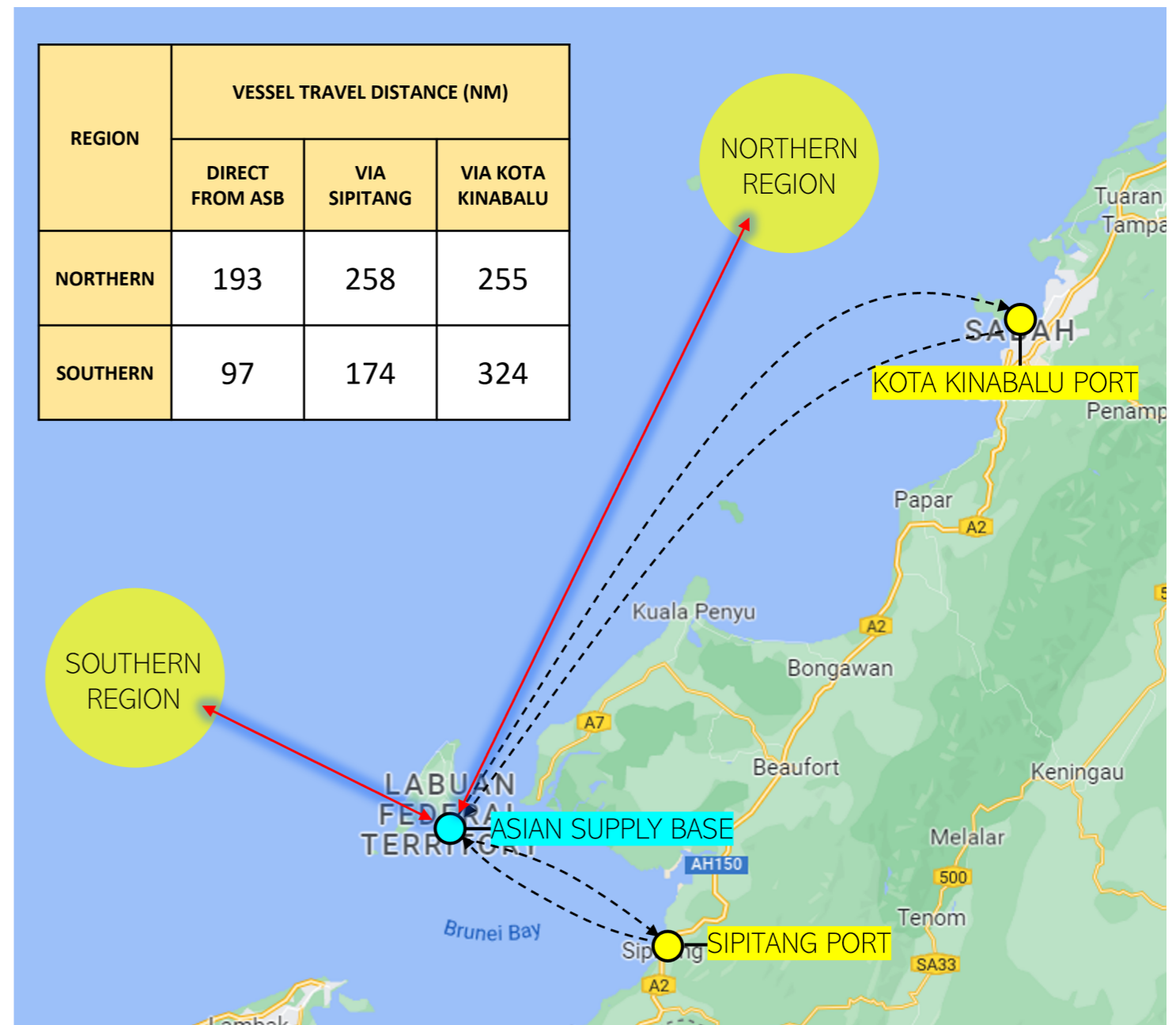


One of the landing crafts (LCT) vessel owned by ASB that is currently dedicated for 3PL work package for PETRONAS MMS — the **Natah 33** vessel.

first phase, ASB has successfully won the tender to supply two (2) LCTs for PETRONAS. With regards to this project, ASB is looking at a total of fifteen (15) years contract duration, with a primary term of seven (7) years. This does not stop here; at the present moment, ASB is looking forward to any marine vessel contract roll out by PACs. ASB is keen to invest in new shipbuilding if being awarded with long-term contract.

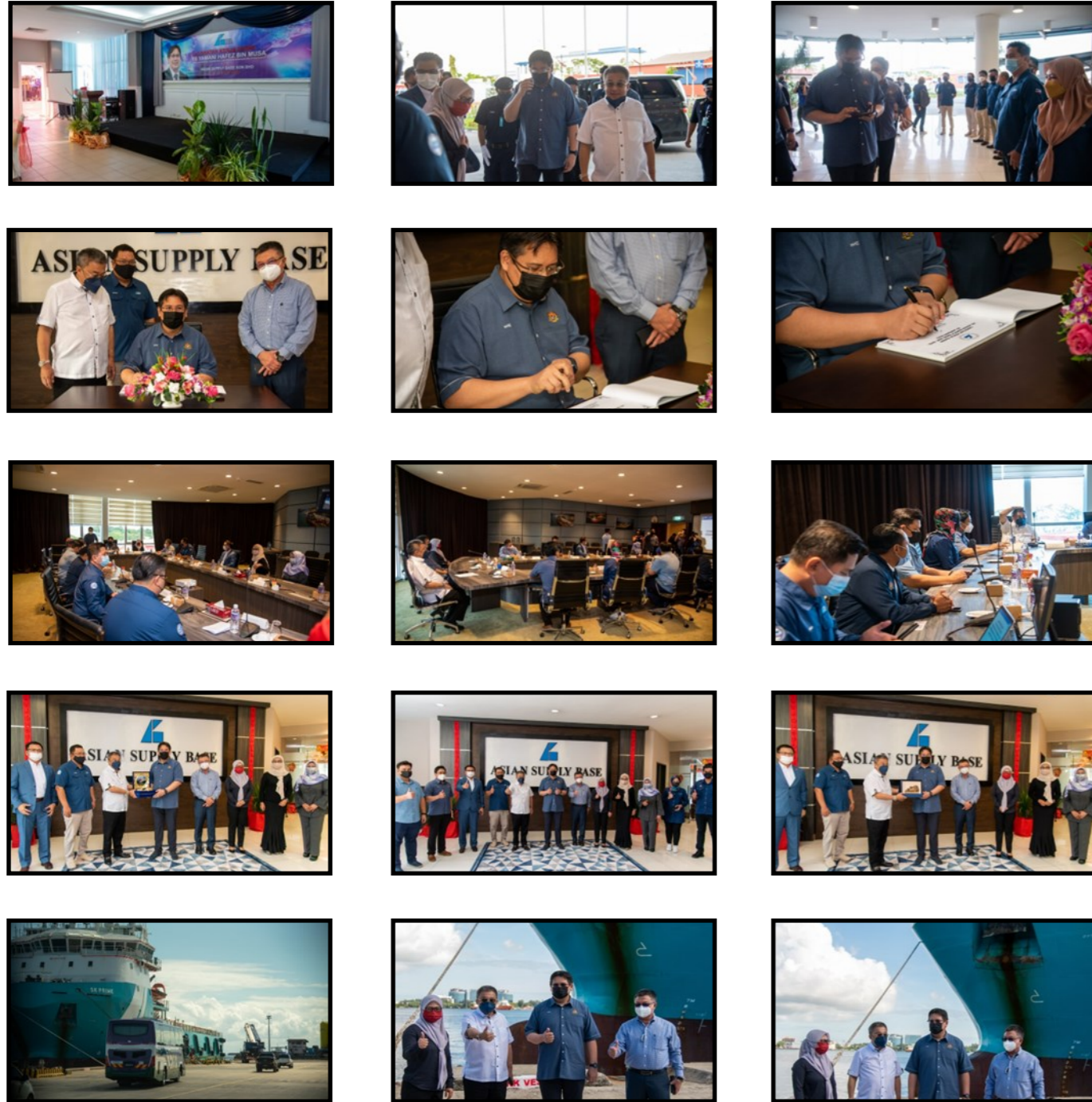
## SABAH HIGH SEAS SOP EXEMPTION

In the effort to reduce client’s burden in carrying out oil and gas activities, ASB has successfully obtained the exemption for Sabah High Seas SOP from the Sabah Chief Minister’s office and Sabah Immigration Department. With this SOP exemption, vessel owners will be able to sail directly from ASB Jetty in Labuan to Sabah High Seas without the need to enter Sipitang or Kota Kinabalu port for arrival/departure clearance from Sabah Immigration Department. This facility will ease ASB clients sailing directly from Labuan to Sabah High Seas — as additional diversion in voyage will greatly impact their travel time and distance, which will subsequently increase their operational cost.



# Q1, 2022 SNAPSHOTS

- OFFICIAL VISIT FROM YB YAMANI HAFEZ BIN MUSA, DEPUTY MINISTER OF FINANCE II — 29 JANUARY 2022



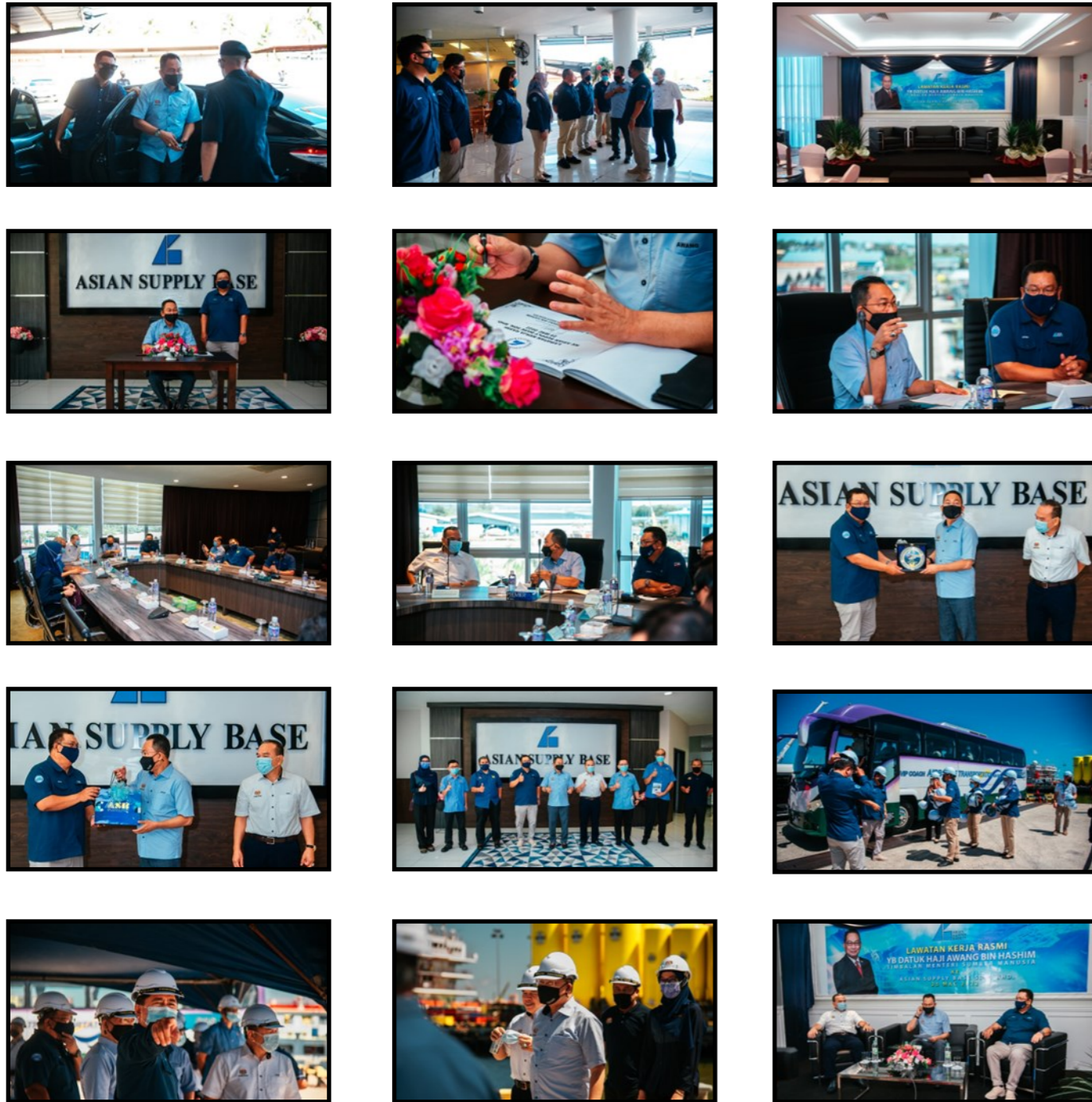
- OFFICIAL VISIT FROM HEAD OF SABAH STATE ATTORNEY & SECRETARY OF STATE HOME AFFAIRS AND RESEARCH OFFICE, CHIEF MINISTER DEPARTMENT

— 7 MARCH 2022



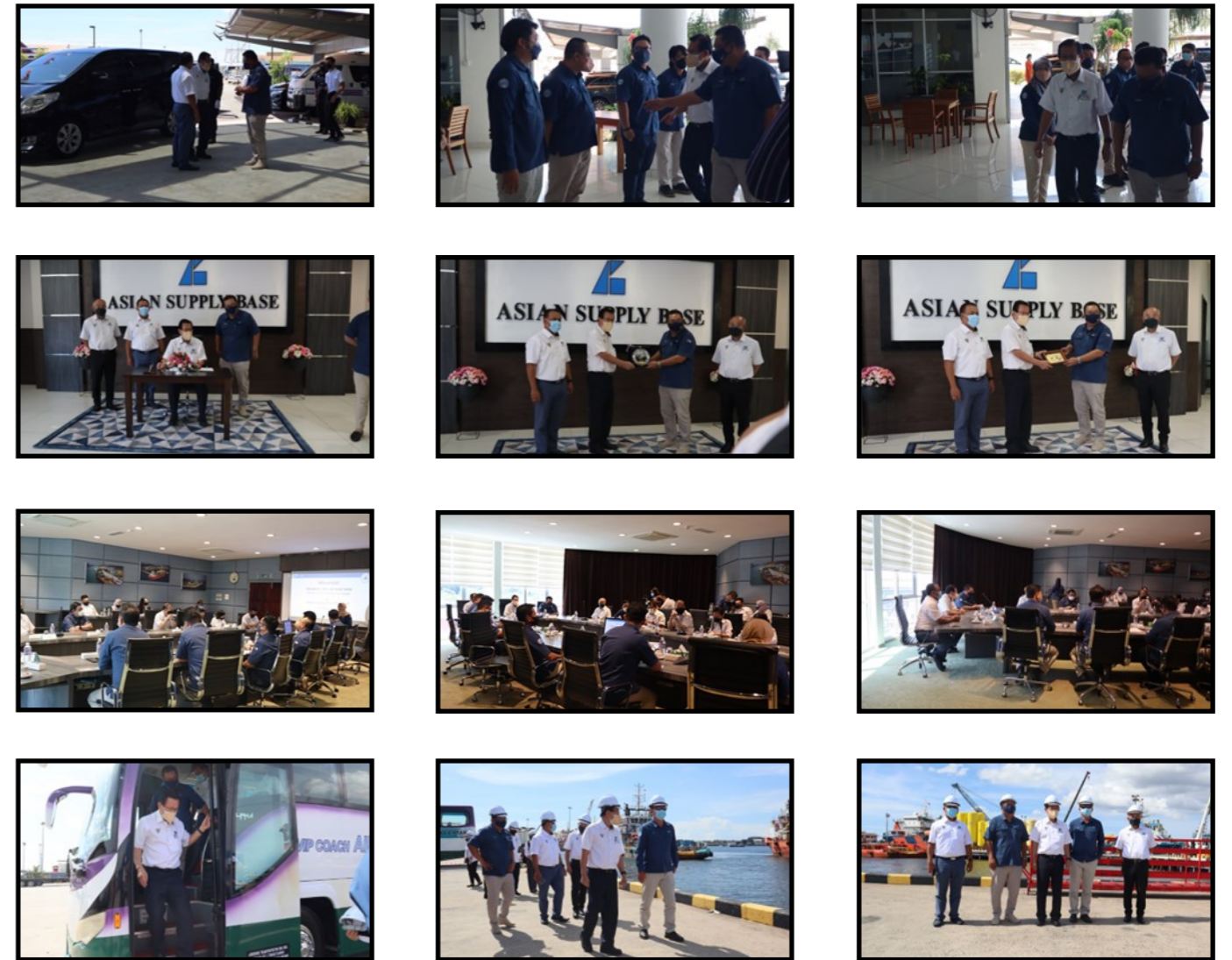
● OFFICIAL VISIT FROM THE DEPUTY MINISTER OF HUMAN RESOURCES

— 25 MARCH 2022



● OFFICIAL VISIT FROM MINISTER OF TRANSPORT, SARAWAK

— 29 MARCH 2022





#### **OFFICE LOCATION**

Wisma ASB,  
Ranca Ranca Industrial Estate,  
P.O.BOX 80751,  
87017 Labuan Federal Territory,  
Malaysia

#### **CONTACT US**

Phone:

+(6087) 411 611/612/613/614

Fax:

+(6087) 425 223 (Corporate Office)  
+(6087) 415 477 (Finance Services)  
+(6087) 417 709 (Operations / Logistics)

For more info, visit our website at  
[www.asiansupplybase.com](http://www.asiansupplybase.com)

or scan the QR code below to get a digital copy  
of our company magazine

